






# WimTec® OCEAN P10


 **Electrical thermostat mixer with hot-water blocking mechanism**  
For maximum safety.


 **AquaCap sensor technology**  
The AquaCap sensor buttons light up when a user approaches. A gentle tap is all it takes to set the kind of water jet, temperature and water volume.

 **Automatic stop**  
Once you clear the detection range or after the adjusted flushing stop time has elapsed, the water will stop automatically. This saves energy and water.

 **Memory function**  
You can store the water volume and temperature for the individual water delivery points (rain shower, waterfall shower, hand shower) using the intuitive, individual user profiles.

 **Warm water rinse**  
After activation, water will flow until the adjusted temperature is reached without the need for you to remain within the detection range if the automatic stop has been enabled.

 **Intelligent stagnation flush**  
An automatic stagnation flush is performed whenever the fitting has not been used for the duration of the adjusted flushing interval, thus preventing an uncontrolled rise in the number of bacteria in the drinking water system.

 **Thermal disinfection with scalding protection**  
Hot water is released irrespective of the temperature setting of the thermostat mixer; instead, it is released externally, e.g., via a key switch. While thermal disinfection is in progress, the infrared sensor monitors the detection range and immediately stops the flow of water if a user approaches.

 **Cleaning stop**  
For disabling the fitting via the user programme..



White glass

Black glass

## Function:



### Water starts flowing

As soon as the user taps the AquaCap sensor button.



### Water stops flowing

By tapping the AquaCap sensor button again, once the adjusted flushing stop time has elapsed or, if the automatic stop has been enabled, when leaving the detection range.

## Features:



### Memory function:

Intuitively store the desired water volume and temperature for the selected water delivery point using the individual user profiles.



### Waterfall shower:

The WimTec OCEAN overhead shower unit brings the spa into the shower – for your enjoyment. You can select between a soft rain shower and a refreshing waterfall shower.

**Technical data:**

**WimTec OCEAN P10 - TD 12 V:**

Supply voltage: WimTec flush-mount power supply  
230 V 50 Hz / 12 V=  
Power consumption: max. 16 W

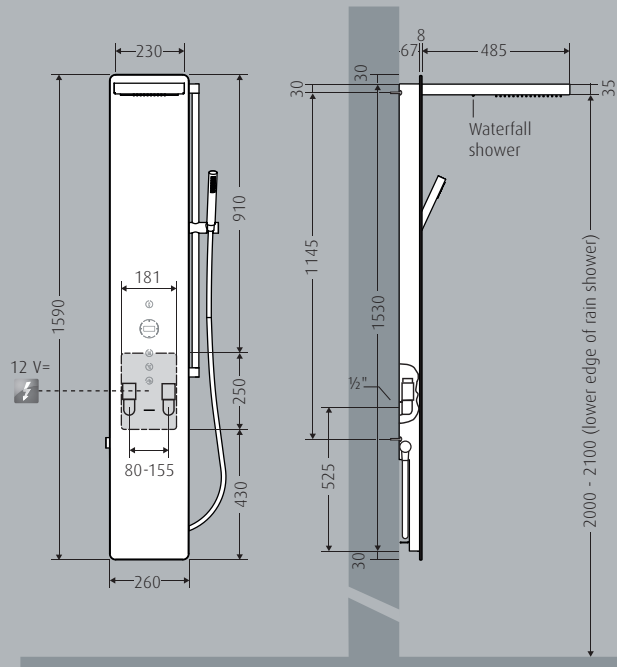
**Further technical data:**

Thermostat: electrical mixer with 3 outlets and an adjustable hot-water blocking mechanism (38 °C or 45 °C)  
Detection range: adjustable from 30 - 70 cm  
Warm water rinse: auto temperature function  
Flushing stop time: adjustable from 10 s to 20 min  
Automatic stop: can be enabled  
Stagnation flush: can be enabled, flushing interval: after 3 h to 48 h of non-usage, flushing duration: automatic, PWH and PWC line for max. 45 s  
Cleaning stop: for 5 min  
Flow pressure: max. 0.5 MPa (5 bar)  
Static pressure: max. 1 MPa (10 bar)  
Water temperature: max. 70 °C (max. 80 °C for max. 10 min)  
Flow rate: max. 22 l/min at 0.3 MPa (3 bar)  
Flow rate hand shower: max. 10 l/min at 0.3 MPa (3 bar)  
Water inlet: R 1/2" IT  
Noise class: I

**Materials:**

Front plate: safety glass (ESG)  
Rain and waterfall shower: chrome-plated stainless steel

**Dimensions in mm:**



**Electr. connection:** 2 x 0.5 - 1.5 mm<sup>2</sup> total cable length max. 100 m.  
**Attention:** Do not install the power supply in the panel or protected zones, if applicable.  
**Control line for version with thermal disinfection:** 2 x 0.5 - 1.0 mm<sup>2</sup> total cable length max. 100 m.

Can be attached to existing two-point connections (153-mm standard measure).



**Designation**

**Material**

**Art. no.**

**PG**

**Delivery scope WimTec OCEAN P10:**

Base body, safety glass front plate with integrated electronics module, WimTec flush-mount power supply, electrical thermostat mixer with hot-water blocking mechanism and temperature sensor, rain shower with integrated waterfall shower, hand shower with push rod.

|   |             |         |    |
|---|-------------|---------|----|
| <b>WimTec OCEAN P10 - TD 12 V</b>   | White glass | 121 650 | 10 |
| Electronic shower panel with electrical thermostat mixer for mains operation. | Black glass | 121 643 | 10 |

Accessories and spare parts see page 200 onwards.